

wework

501

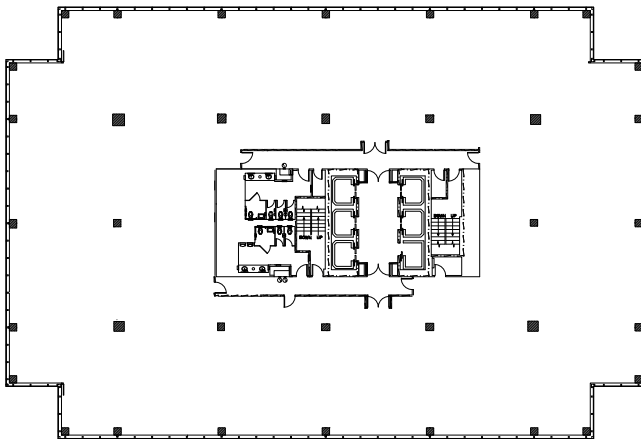
EAST
KENNEDY

DOWNTOWN TAMPA

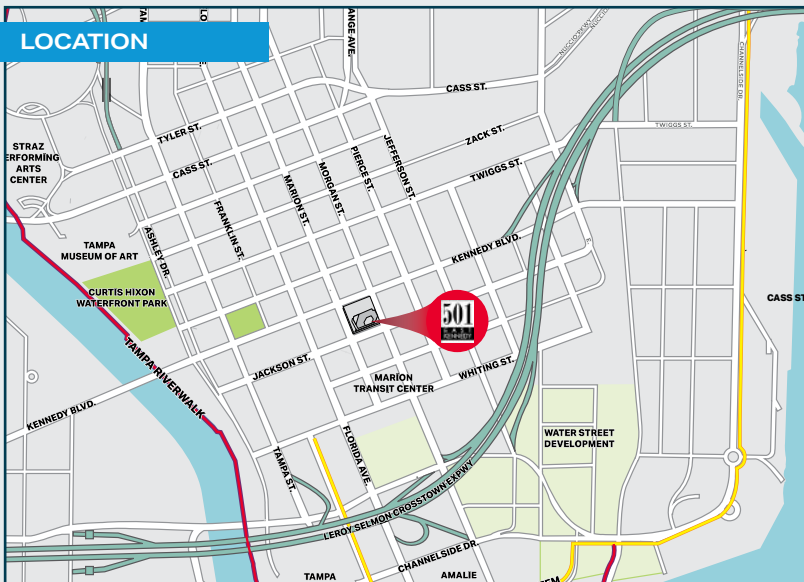
ATRIUM



TYPICAL FLOOR



LOCATION



501 East Kennedy

SPECIFICATIONS

Location:	501 E. Kennedy Blvd. Tampa, FL
Submarket:	Downtown Tampa
Size:	296,000 ± RSF
Stories:	20
Parking:	1,340,000 RSF

FEATURES & AMENITIES

- + Conference Center
- + Fitness Center
- + Collaboration area with Wi-Fi
- + Self-serve market
- + 2 on-site restaurants
- + Full-service bank with ATM
- + On-site security
- + Integrated parking
- + After-hours card access
- + On-site property management

LOCATION

- + Highly accessible with convenient routes to I-275 and Crosstown Expressway
- + 50+ Dining Options within ½ mile
- + 12 Hotels within 1 mile
- + 45+ Housing Options within 1 mile
- + 50+ Parking Facilities within 1 mile

WALKABLE TO

- + Tampa Riverwalk
- + Curtis Hixon Waterfront Park
- + Tampa Museum of Art
- + Water Street
- + Amalie Arena
- + Federal & County Courthouses
- + Marion Transit Center
- + TECO Streetcar System